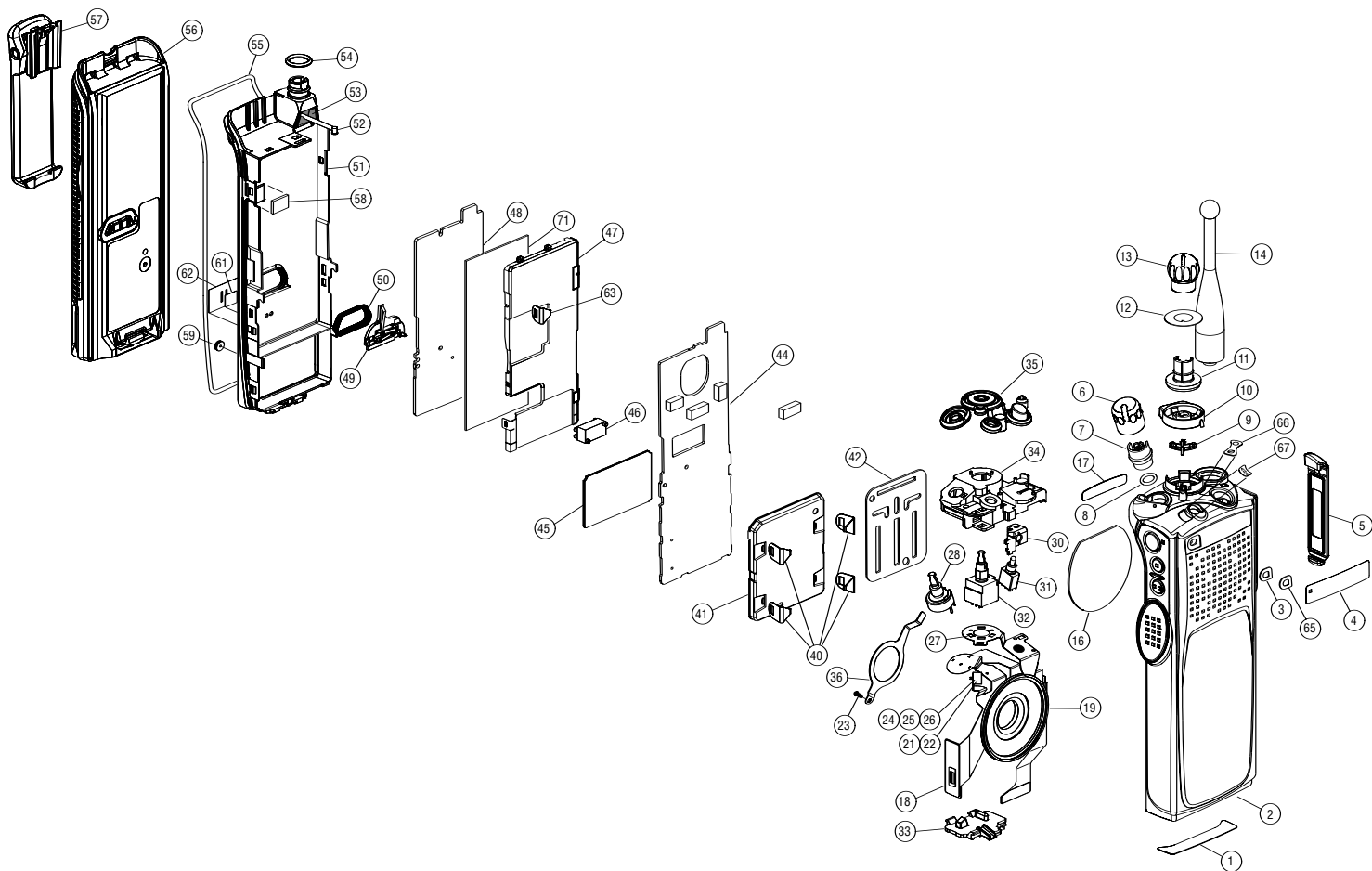


# XTS5000 Series



## Parts List



# XTS5000 Series



## Parts List

### Model I

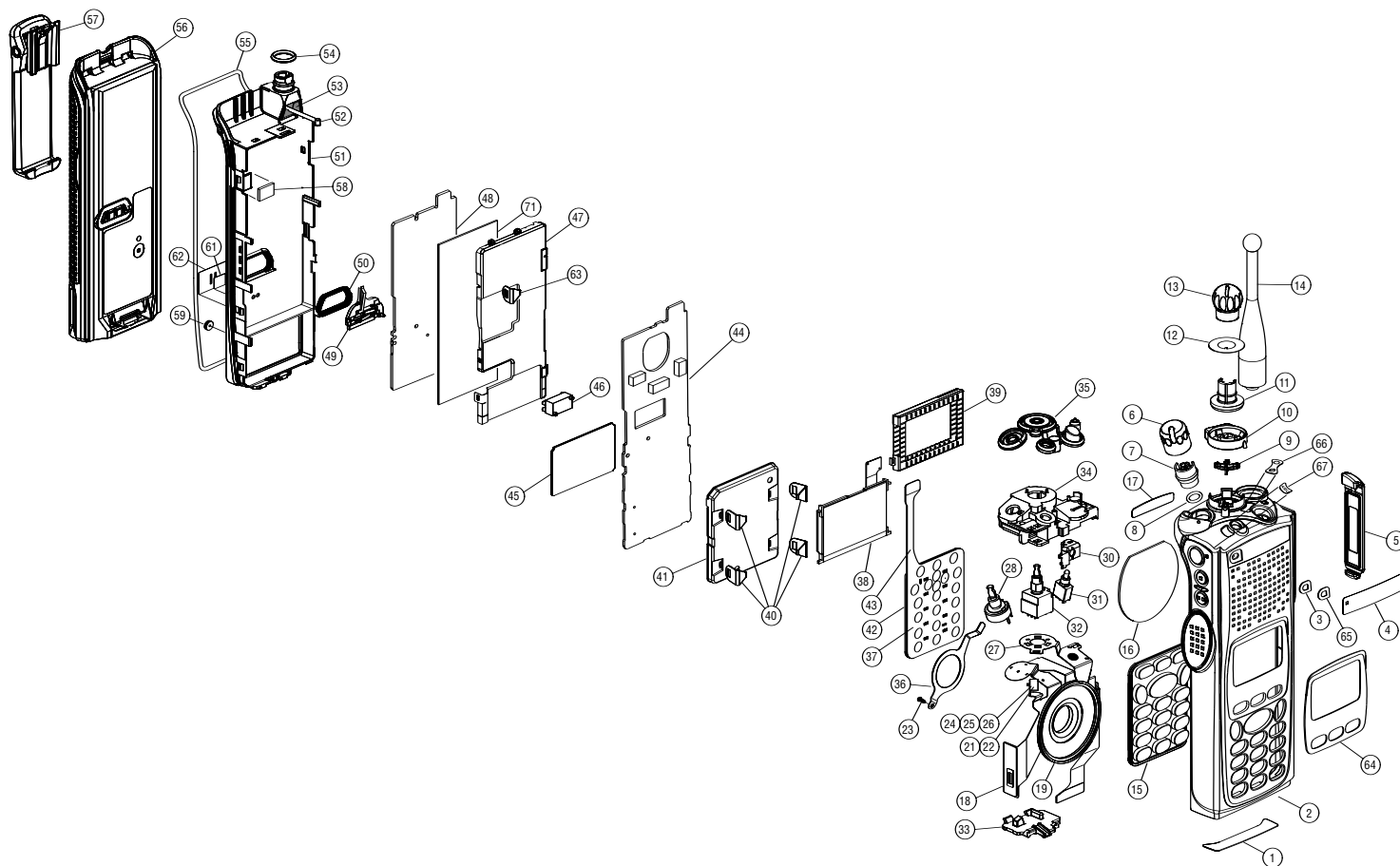
REF. NO.	PART NO.	DESCRIPTION	REF. NO.	PART NO.	DESCRIPTION
1	<b>3305630Z01</b>	Label, Motorola Bottom (part of item 2)	26	<b>0660076B05</b>	Resistor, 150k $\Omega$ (part of item 18)
2	<b>1585468D07</b>	Assembly, Model I Housing (Standard Models)	27	<b>4805729G99</b>	LED, Green/Red (5 req'd) (part of item 18)
	or	(includes items 1, 3, 4, 5, 16, 17, and 65 thru 67)	28	<b>1805629V04</b>	Potentiometer, Volume (part of item 18)
	<b>1585468D10</b>	Assembly, Model I Housing (R Models)	30	<b>1486164A02</b>	Boot, Microphone Boot (part of item 18)
	or	(includes items 1, 3, 4, 5, 16, 17, and 65 thru 67)	31	<b>4005572W04</b>	Switch, Toggle, 3 Pos. A/B/C (part of item 18)
	<b>1585468D13</b>	Assembly, Model I Housing (Yellow R Model)	32	<b>4002622J04</b>	Switch, Frequency (part of item 18)
		(includes items 1, 3, 4, 5, 16, 17, and 65 thru 67)	33	<b>0705357Z01</b>	Bracket, Controls Bottom (part of item 18)
3	<b>3285757D01</b>	Membrane, Microphone (part of item 2)	34	<b>0705352Z01</b>	Bracket, Controls (part of item 18)
4	<b>3385221D01</b>	Label, Motorola Front (part of item 2)	35	<b>3205354Z02</b>	Seal, Controls
	or		36	<b>4285400D01</b>	Retainer, Speaker
	<b>3385221D02</b>	Label, Motorola Front (R Model) (part of item 2)	40	<b>4205631Z01</b>	Clip, Control Locking (Part of item 41) (4 req'd)
	or		41	<b>2685567D01</b>	Shield, Controller Front (Includes items 40 and 42)
	<b>3385221D03</b>	Label, Motorola Front (Yellow R Model)	42	<b>4285288D01</b>	Retainer (Part of item 41)
		(part of item 2)	44	<b>NTN9564C</b>	Kit, VOCON Board
5	<b>1505579Z01</b>	Cover, Universal Connector (part of item 2)	45	----	Kit, Encryption UCM II
6	<b>3605371Z01</b>	Knob, Volume	46	<b>2885866A01</b>	Connector, Compression, 26-Pin
7	<b>4305372Z01</b>	Insert, Volume Knob Retainer	47	<b>2685220D06</b>	Shield, RF with Insulator and Clip (Includes item 63)
8	<b>3205379W01</b>	"O"-Ring, Volume Torque	48	<b>NUF3577A</b>	Kit Transceiver Board, 700/800MHz
9	<b>6105376Z01</b>	Lightpipe, Indicator	49	<b>0985973B01</b>	Assembly, B+
10	<b>4505375Z01</b>	Lever, Secure		or	
11	<b>4305373Z02</b>	Insert, Frequency Knob Retainer		----	Assembly, B+ (R Models)
12	<b>1305374Z03</b>	Escutcheon, Frequency Dial	50	<b>3205351Z01</b>	Seal, B+
13	<b>3605370Z01</b>	Knob, Frequency		or	
14	<b>8505241U03</b>	Antenna, 800MHz Whip (806-870MHz)		<b>3205351Z02</b>	Seal, B+ (R Models)
	or		51	<b>2785219D01</b>	Assembly, Casting
	<b>8505241U06</b>	Antenna, 800MHz Stubby 1/4 Wave (806-870MHz)		or	
	or			<b>2785219D04</b>	Assembly, Casting (R Models)
	<b>8505241U11</b>	Antenna, 700/800MHz Whip (764-870MHz)	52	<b>3005664Z01</b>	Assembly, Coaxial Cable
16	<b>3585340D01</b>	Mesh, Speaker (part of item 2)	53	<b>7505487Z01</b>	Pad, Coaxial
17	<b>3305574Z01</b>	Label, Motorola back (part of item 2)	54	<b>3205082E96</b>	Gasket, O-Ring Bushing
	or		55	<b>3205349Z03</b>	Seal, Main
	<b>3305574Z02</b>	Label, Motorola back (Yellow R Model)	56	----	Battery, NiCd, Ultra-High Capacity
		(part of item 2)	57	<b>NTN8266B</b>	Kit, Belt Clip
18	<b>0105956T85</b>	Assembly, Controls Universal Flex (includes items 19, 21, 22, 24 thru 28, and 30 thru 34)	58	<b>3262737D01</b>	Pad, Thermal
19	<b>5085272D01</b>	Speaker (part of item 18)	59	<b>3285688D01</b>	Plug, Vacuum Test Port
21	----	Microphone, Electret (part of item 18)	61	<b>3285877B02</b>	Seal, Port
		(not field replaceable)	62	<b>3385873B01</b>	Label, Seal
22	----	Capacitor, 56pF (part of item 18)	63	<b>4285704D01</b>	Clip, RF Locking (Part of item 47)
		(not field replaceable)	65	<b>3585741D01</b>	Mesh, Microphone (part of item 2)
23	<b>0300140332</b>	Screw, Tapping - 28 x 3/16	66	<b>3385658D01</b>	Escutcheon, Concentric Switch (part of item 2)
24	<b>0660076A93</b>	Resistor, 68k $\Omega$ (part of item 18)	67	<b>3385657D01</b>	Escutcheon, Toggle (part of item 2)
25	<b>0660076A96</b>	Resistor, 91k $\Omega$ (part of item 18)	71	<b>7585936D01</b>	Pad



# XTS5000 Series



## Parts List



# XTS5000 Series



## Parts List

### Model II & III

REF. NO.	PART NO.	DESCRIPTION	REF. NO.	PART NO.	DESCRIPTION
1	<b>3305630Z01</b>	Label, Motorola Bottom (part of item 2)	25	<b>0660076A96</b>	Resistor, 91k $\Omega$ (part of item 18)
2	<b>1585468D08</b>	Assembly, Model II Housing (Standard Models)	26	<b>0660076B05</b>	Resistor, 150k $\Omega$ (part of item 18)
	or	(includes items 1, 3, 4, 5, 16, 17, and 64 thru 67)	27	<b>4805729G99</b>	LED, Green/Red (5 req'd) (part of item 18)
	<b>1585468D11</b>	Assembly, Model II Housing (R Models)	28	<b>1805629V04</b>	Potentiometer, Volume (part of item 18)
	or	(includes items 1, 3, 4, 5, 16, 17, and 64 thru 67)	30	<b>1486164A02</b>	Boot, Microphone Boot (part of item 18)
	<b>1585468D14</b>	Assembly, Model II Housing (Yellow R Model)	31	<b>4005572W04</b>	Switch, Toggle, 3 Pos. A/B/C (part of item 18)
	(includes items 1, 3, 4, 5, 16, 17, and 64 thru 67)		32	<b>4002622J04</b>	Switch, Frequency (part of item 18)
	<b>1585468D09</b>	Assembly, Model III Housing (Standard Models)	33	<b>0705357Z01</b>	Bracket, Controls Bottom (part of item 18)
	or	(includes items 1, 3, 4, 16, 17, and 64 thru 67)	34	<b>0705352Z01</b>	Bracket, Controls (part of item 18)
	<b>1585468D12</b>	Assembly, Model III Housing (R Models)	35	<b>3205354Z02</b>	Seal, Controls
	or	(includes items 1, 3, 4, 16, 17, and 64 thru 67)	36	<b>4285400D01</b>	Retainer, Speaker
	<b>1585468D15</b>	Assembly, Model III Housing (Yellow R Model)	37	<b>2685567D03</b>	Assembly, Keypad Flex, Model III
	(includes items 1, 3, 4, 5, 16, 17, and 64 thru 67)			or	(Includes items 41 and 43)
3	<b>3285757D01</b>	Membrane, Microphone (part of item 2)		<b>2685567D02</b>	Assembly, Keypad Flex, Model II
4	<b>3385221D01</b>	Label, Motorola Front (part of item 2)		(Includes item 41 and 43)	
	or		38	<b>7285726C01</b>	Module, LCD
	<b>3385221D02</b>	Label, Motorola Front (R Models) (part of item 2)	39	<b>7585189D01</b>	Pad, Display Locator
	or		40	<b>4205631Z01</b>	Clip, Control Locking (part of item 41) (4 req'd)
	<b>3385221D03</b>	Label, Motorola Front (Yellow R Models)	41	<b>2685567D01</b>	Shield, Controller Front (Includes items 40 and 42)
	(part of item 2)		42	----	Retainer (Part of item 41)
5	<b>1505579Z01</b>	Cover, Universal Connector (part of item 2)	43	<b>8485188D01</b>	Flex, Keypad, Model III (part of item 37)
6	<b>3605371Z01</b>	Knob, Volume		or	
7	<b>4305372Z01</b>	Insert, Volume Knob Retainer		<b>8485187D01</b>	Flex, Keypad, Model III (part of item 37)
8	<b>3205379W01</b>	"O"-Ring, Volume Torque	44	<b>NTN9564C</b>	Kit, VOCON Board
9	<b>6105376Z01</b>	Lightpipe, Indicator	45	----	Kit, Encryption UCM II
10	<b>4505375Z01</b>	Lever, Secure	46	<b>2885866A01</b>	Connector, Compression, 26-Pin
11	<b>4305373Z02</b>	Insert, Frequency Knob Retainer	47	<b>2685220D06</b>	Shield, RF with Insulator and Clip (Includes item 63)
12	<b>1305374Z03</b>	Escutcheon, Frequency Dial	48	<b>NUF3577A</b>	Kit, Transceiver Board, 700/800MHz
13	<b>3605370Z01</b>	Knob, Frequency	49	<b>0985973B01</b>	Assembly, B+
14	<b>8505241U03</b>	Antenna, 800MHz Whip (806-870MHz)		or	
	or			----	Assembly, B+ (R Models)
	<b>NAF4000B</b>	Antenna, 800MHz Dipole (806-870MHz)	50	<b>3205351Z01</b>	Seal, B+
	or			or	
	<b>8505241U06</b>	Antenna, 800MHz Stubby 1/4 Wave (806-870MHz)		<b>3205351Z02</b>	Seal, B+ (R Models)
	or		51	<b>2785219D01</b>	Assembly, Casting
	<b>8505241U11</b>	Antenna, 700/800MHz Whip (764-870MHz)		or	
15	<b>7585104D01</b>	Keypad, Model III		<b>2785219D04</b>	Assembly, Casting (R Models)
	or		52	<b>3005664Z01</b>	Assembly, Coaxial Cable
	<b>7585104D02</b>	Keypad, Model II	53	<b>7505487Z01</b>	Pad, Coax
16	<b>3585340D01</b>	Mesh, Speaker (part of item 2)	54	<b>3205082E96</b>	Gasket, O-Ring Bushing
17	<b>3305574Z01</b>	Label, Motorola Back (part of item 2)	55	<b>3205349Z03</b>	Seal, Main
	or		56	----	Battery, NiCd, Ultra-High Capacity
	<b>3305574Z02</b>	Label, Motorola Back (Yellow R Models)	57	<b>NTN8266B</b>	Kit, Belt Clip
	(part of item 2)		58	<b>3262737D01</b>	Pad, Thermal
18	<b>0105956T85</b>	Assembly, Controls Universal Flex (includes items 19, 21, 22, 24 thru 28, and 30 thru 34)	59	<b>3285688D01</b>	Plug, Vacuum Test Port
19	<b>5085272D01</b>	Speaker (part of item 18)	61	<b>3285877B02</b>	Seal, Port
21	----	Microphone, Electret (part of item 18)	62	<b>3385873B01</b>	Label, Seal
	(not field replaceable)		63	<b>4285704D01</b>	Clip, RF Locking (Part of item 47)
22	----	Capacitor, 56pF (part of item 18)	64	<b>3385419C01</b>	Bezel, Display (part of item 2)
	(not field replaceable)		65	<b>3585741D01</b>	Mesh, Microphone (part of item 2)
23	<b>0300140332</b>	Screw, Tapping - 28 x 3/16	66	<b>3385658D01</b>	Escutcheon, Concentric Switch (part of item 2)
24	<b>0660076A93</b>	Resistor, 68k $\Omega$ (part of item 18)	67	<b>3385657D01</b>	Escutcheon, Toggle (part of item 2)
			71	<b>7585936D01</b>	Pad



## XTS5000 Series



### Portable Accessories

#### Chargers

##### Single Unit Universal Tri-Chemistry Chargers

Tri-Chem chargers support Nickel Cadmium, Nickel Metal Hydride and Lithium-ion batteries.

**NTN1667A** Single Unit, universal tri-chem rapid charge, 110V

**NTN1668A** Single Unit, universal tri-chem rapid charge, 220V

**NTN1669A** Single Unit, universal tri-chem rapid charge, 240V

##### Multi-Unit Chargers



NTN1177D

Ideal charger for multi-shift operation or centrally located equipment rooms where spare batteries are always required. They can accommodate up to 6 batteries at once.

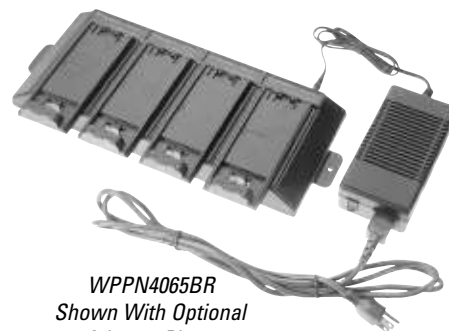
**NTN1177D** Multi-Unit, rapid rate, 110V; supports NiCd and NiMH batteries

**NTN1178D** Multi-Unit, rapid rate, 220V (not for Lithium-ion)

**NTN1179D** Multi-Unit, rapid rate, 240V (not for Lithium-ion)

#### Motorola Conditioning Charger

The MCC will help extend battery life and enhance battery operation. It will safely condition and charge your specified Nickel Cadmium (NiCd) and Nickel Metal Hydride (NiMH) batteries in approximately an hour.



WPPN4065BR  
Shown With Optional  
Adapter Plates

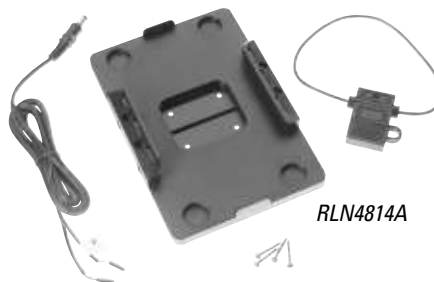
**WPLN4086CR** MCC Kit, 110V AC; includes both base unit and 7V adapter

**WPLN4087CR** MCC Kit, 220V AC; includes both base unit and 7V adapter

**WPPN4021CR** 7 Volt Adapter plate only

**WPPN4065BR** Multi-Unit Conditioning Charger Four-station Base, 110V; (order adapter plates separately)

**3080384G15** Cigarette Lighter Adapter Cord



RLN4814A

**RLN4814A** Vehicular Mounting Bracket for single unit Motorola Conditioning Charger

**3080384M21** DC Hard Wire Cable for vehicular installation (included in RLN4814A)

**HLN9179A** Quick-Release Attachment for Mounting Bracket RLN4814

**HLN9228A** Mounting accessories – Clam shell mounting bracket

## XTS5000 Series

## Portable Accessories

### Battery Maintenance System<sup>plus</sup> (BMS<sup>plus</sup>)

#### Increase the useful life of your batteries.

Using interchangeable battery adapters (sold separately), the BMS<sup>plus</sup> is capable of charging and discharging, analyzing, conditioning and cycle testing batteries. It supports NiCd, NiMH, and Li-ion battery chemistries and tracks battery voltage and capacity (mAh). The BMS<sup>plus</sup> offers a 3-year warranty. Its easy-to-use design supports hundred of 2-way, cellular, and camcorder batteries. Includes serial printer\* port (RS-232)



WPLN4079BR

**WPLN4079BR** Six-Station, 110V AC, 50/60 Hz

**WPLN4080BR** Six-Station, 230V AC, 50/60 Hz

**WPPN4085AR** BMS<sup>plus</sup> field Upgrade Kit for WPLN4079AR, WPLN4080AR and WPLN4081AR; allows these units to support Li-ion battery chemistries.

**NDN4005B** Three-station 110V AC, 50/60 Hz (does not support Li-ion or 3-cell batteries)

**NDN4006B** Three-station 230V AC, 50/60 Hz (does not support Li-ion or 3-cell batteries)

### BMS<sup>plus</sup> Adapters

**WPPN4019AR** Adapter, NiCd only

**WPPN4022AR** Adapter, NiCd and NiMH

**WPPN4086AR** Adapter, NiCd, NiMH and Li-ion

### Battery Optimizing System II (BOS II)



WPLN4124AR

No other battery analyzer matches the speed, accuracy, and versatility of the Battery Optimizing System II. Ideal for large fleet, public safety, and all other users who rely on their battery performance. Now with increased power, more sophisticated programming options, and easier to use navigation paths, optimizing your batteries was never easier. Key features include:

- Support for NiCd, NiMH, Li-ion, and SLA batteries
- 100 watt power supply and programmable from 100 mAh to 4 amps per station
- Interchangeable adapters accommodate all major brands
- Includes a variety of user programs and allows for customizable programming
- Proprietary recondition cycle restores NiCd and NiMH batteries
- Increased processing power and testing resolution – including a three minute Quicktest that measures the batteries State of Health (SoH)
- Printer output for reports and labels
- Three year warranty

**WPLN4124AR** BOS II, Four-Station, 100-240V AC (US line cord)

**WPLN4125AR** BOS II, Four-Station, 100-240V AC (UK/Euro line cords)

### BOS II Adapter

**RL-75765** Adapter, XTS5000

\* Compatible with the STAR Micronics SP200 Series printers (and other printers with STAR emulation); available from any STAR Micronics distributor.



## XTS5000 Series



## Portable Accessories

### Chargers

#### **impress™ Smart Energy System**



**WPLN4111AR**

The impress™ smart energy system ensures maximum talk-time and optimized battery cycle life through the use of its advanced charging algorithm and automatic reconditioning features. The smart energy system reconditions impress batteries when they need it automatically, keeping them in peak condition.

Its advanced conditioning features allow

batteries to be safely left on the charger for extended periods of time without incurring the damaging heat build-up which can rob batteries of cycle life. In addition, batteries left on the charger are kept fully charged so they are always ready when you need them. The impress system reconditions batteries when they need it based on their usage pattern. Talk time and cycle life are optimized and the need for manual maintenance programs reduced or eliminated. This rapid-rate tri-chemistry charging system will also charge existing legacy batteries and supports multiple radio platforms including Saber, XTS, and HT1000 series portables.

**WPLN4111AR** impress Smart Energy System Charger

**WPLN4108BR** impress Smart Energy System Multi-Unit Charger

#### **impress™ Multi-Unit Charger with Display Modules**

The impress Multi-Unit Charger with Charger Display Modules has a two-line LCD screen for each of its six charger pockets that provides users with a host of valuable battery information. When a calibrated impress battery is inserted into a pocket, it provides the current battery mAh and percent of rated capacity which allows the user to immediately know the status of the battery without having to charge and discharge the battery. Additionally, the unit displays the remaining charge time which lets the user know when the impress battery will be ready for use. Additional information displayed includes: battery serial and part number information, battery chemistry, voltage and charge status including the version of the charger and display modules.

**WPLN4130AR** Multi-Unit Charger with Display Modules

**RLN5382A** Charger Display Module for impress multi-unit charger version 1.3 or later

**RLN5591A** Charger Display Module for impress multi-unit charger version 1.2 or earlier (Requires unit to be sent to the Rockford Service Center – instruction sheet provided)



**WPLN4130AR**

### Chargers

#### **impress™ Bundle Packs**

Provide significant savings on the impress™ products by bundling a charger and batteries together as a Smart Energy System package.

**RLN5263A** impress Charger with two HNN9031AR batteries

**RLN5262A** impress Charger with two HNN9023AR batteries

**RLN5486A** impress Charger with two NNTN4436AR Intrinsically Safe (FM) batteries.

**RLN5487A** impress Charger with two NNTN4437AR ruggedized batteries.

**RLN5441B** impress Multi-Unit Charger with six HNN9032AR batteries

**RLN5443B** impress Multi-Unit Charger with six HNN9031AR batteries

**RLN5489B** impress Multi-unit Charger with six NNTN4436AR batteries

**RLN5490B** impress Multi-unit Charger with six NNTN4437AR batteries

#### **Vehicular Charger**

This vehicular charger is a 12V DC that supports nickel cadmium (NiCd), nickel metal hydride (NiMH), and Lithium Ion (Li-ion) batteries for XTS3000, XTS3500 and XTS5000. A microprocessor senses the type of battery installed and controls the rate of charge accordingly. Batteries are charged at a rapid rate until fully charged at which point the unit reverts to a trickle charge. Batteries can be charged while on the radio or stand alone. The radio can be operated while in the charger and this unit is PAC RT compatible. The vehicular charger consists of a console, mounting hardware, and a supply cable.

**NTN9176B** Vehicular Charger



**NTN9176B**

## ***XTS5000 Series***

## ***Portable Accessories***

### ***Chargers***

#### ***Travel Charger***

This compact Travel Charger mounts inside a vehicle for convenient battery charging throughout the workday, helping to assure users that they will never be out of touch due to lack of power. It has a voltage-regulated lighter adapter that plugs into the vehicle's socket, and includes a mounting bracket with nylon strap to hold the Two-way radio in place. Designed to charge batteries on or off the radio; users can use their radio while charging. A maintenance mode keeps batteries charged without damaging heat buildup, and the charging algorithm provides for cool charging of the battery. A recharge mode rapid charges batteries to compensate for capacity loss caused when radios are kept in receive or transmit mode.



RLN4884A

**RLN4884B** Travel charger

#### ***Vehicular Adapters***

Allows customers to adapt XTS3000, XTS3500 and XTS5000 portables for mobile operation. Provides in-vehicle rapid and trickle charging for nickel cadmium (NiCd), nickel metal hydride (NiMH), and Lithium Ion (Li-ion) batteries. These units offer quick radio release and dead battery operation and are powered by attaching their supply cable to the 12V battery inside a police car, utility truck or other vehicle. Connectors are provided for the vehicle antenna, mobile microphone and optional amplified loudspeaker (HSN1000B). There is also a general interface connector for additional accessories. A color LED indicates battery recharge status. For XTVA operation, a microphone and RF switch (NTN8327A) are required. The required mobile microphone and optional loudspeaker allow for operation of the portable radio that is similar to that of a mobile.

**NTN8561F** XTS Vehicular Adapter, Closed Face, Mini-UHF

**NTN8560F** XTS Vehicular Adapter, Open Face with limited keypad access, Mini-UHF

**NTN1607F** XTS Vehicular Adapter, Closed Face, BNC

**NTN1606F** XTS Vehicular Adapter, Open Face with limited keypad access, BNC

Adding accessories to the vehicular adapters requires one of the following two kits:

**NTN8941A** XTVA Data Cable Kit

**NTN8943A** XTVA Accessory Adapter Kit

### ***Chargers***

#### ***Additional Accessories for the Vehicular Adapters***

**HMN4069E** Standard White Palm Microphone

**PLN7737B** Hand Held Control Head

**NTN8940B** Trunnion (Required)

**HSN1000B** External Speaker Amplified, 6 Watts

**HLN9330B** Emergency Foot Switch

**GLN7280A** Emergency Pushbutton

**6685687A01** Tool Wrench for RF Switch (Required)

**NTN8327A** RF Adapter (Required)

**NKN6455A** MTVA PA/Speaker Cable



## XTS5000 Series



## Portable Accessories

### Carrying Accessories

#### Carrying Cases

A variety of carrying accessories are available for your comfort and convenience. The carrying cases are available in sizes designed to fit your radio & battery and permit audio to be heard clearly.

##### Model I Radios Only

**NTN8387A** Leather Carry Case with Belt Loop and T-Strap

**NTN8385B** High Activity Swivel Leather Carry Case with 2.5" Swivel Belt Loop and T-Strap

**NTN8386B** High Activity Swivel Leather Carry Case with 3.0" Swivel Belt Loop and T-Strap

**NTN8725A** High Activity Nylon Carry Case with Belt Loop and T-Strap



NTN8385B

##### Model II & III Radios Only



NTN8382B

**NTN8382B** Leather Carry Case with Belt Loop and T-Strap

**NTN8380C** High Activity Swivel Leather Carry Case with 2.5" Swivel Belt Loop and T-Strap



NTN8380C

**NTN8381C** High Activity Swivel Leather Carry Case with 3.0" Swivel Belt Loop and T-Strap Nylon Carry Case

**NTN8725A** High Activity Nylon Carry Case with Belt Loop and T-Strap

**NTN9184A** Leather Carry Case with Belt Loop for Clamshell Battery



NTN8381C

### Carrying Accessories

#### Carrying Case Accessories

##### T-Straps

**NTN8383A** Leather T-Strap Plain Action Snap

**NTN8384A** Leather T-Strap Hard Action Snap

##### High Activity Belt Loops



NTN8039B

**NTN8039B** 2.5" Leather Swivel Belt Loop

**NTN8040B** 3.0" Leather Swivel Belt Loop

**NTN9179A** High Activity Swivel 3.0" Belt Loop with "D" clip for battery



NTN8040B

**NTN9212A** "D" clip for battery (for use with NTN9213A only)

**NTN9213A** 3.0" Belt Loop, High Activity

##### Belt Clips

**NTN8266A** Standard Removable Belt Clip Attachment

**NTN8460A** 3.0" Removable Belt Clip Attachment

##### Belt

**4200865599** 1.75" wide leather belt

##### Carrying Strap

**NTN5243A** Adjustable Black Carrying Strap; attaches to "D" ring on case

##### Chest Pack

**HLN6602A** Universal Chest Pack with Radio Holder, Pen Holder and Velcro Secured Pocket.

**1505596Z02**  
Replacement Strap for HLN6602



HLN6602A

## XTS5000 Series



## Portable Accessories

### Carrying Accessories



RLN4570A

#### Break-a-Way Chest Pack

All of the same features as the original chest pack (HLN6602A) plus break-a-way tabs that allow the entire pack to be pulled off with approximately 10 lbs of pressure. Perfect for railroads, manufacturing locations, construction sites and anywhere that safety is a concern.

**RLN4570A** Break-A-Way Chest Pack



RLN4815A

#### RadioPAK™

It's different from all other holders or cases: more comfortable, more useful and more stylish. Worn around the waist, it holds two-way, iDEN portables or cellular phones right at hand. Includes a separate 6"x8" zippered pouch for other on-the-job necessities. Adjustable nylon weave belt; fits both men and women.

**RLN4815A** RadioPAK™ Radio/Utility Case

**4280384F89** Universal RadioPAK™ Belt Lengthener; fits waists larger than 40"

#### Portable Radio Hanger

The portable radio hanger slides over and hangs from the door panel in a vehicle. The radio's belt clip slides onto the portable hanger allowing convenient, easy mounting. Two sizes are available to fit door panels.

**TDN9327A** Portable Radio Hanger for door panels up to 2-3/4"

**TDN9373A** Portable Radio Hanger for door panels 2-3/4" to 3-1/4"



TDN9327A

### Audio Accessories

#### Remote Speaker Microphones (RSM)

Allows you to talk and listen without removing the radio from the belt, case or charger. Ideal for high noise level environments. These water resistant microphones include: a coiled cord, 3.5mm earjack, swivel clothing clip, and quick disconnect latch.

**\*NMN6193C** Remote Speaker Microphone

**\*NMN6191C** Noise Canceling Remote Speaker Microphone

**0104010J46** Replacement Coil Cord Cable Assembly for remote speaker microphones



NMN6193C

#### Public Safety Speaker/Microphones (PSM)

Public safety speaker microphones include straight cord assembly, 3.5mm earjack, swivel clip, quick disconnect latch, antenna connector, and receive audio high/low toggle switch. Antenna must be ordered separately. Use radio antennas on page 572. Requires NTN8327A RF adapter.

**\*NMN6247A** Public Safety Microphone with Straight Cord, 30"; requires NTN8327A

**\*NMN6250A** Public Safety Microphone with Straight Cord, 24"; requires NTN8327A

**\*NMN6251A** Public Safety Microphone with Straight Cord, 18"; requires NTN8327A



NMN6247A

\* Intrinsically Safe



## XTS5000 Series



## Portable Accessories

### Audio Accessories

#### XTS Series Commander™ Remote Speaker Microphone

The Commander Remote Speaker Microphone is enhanced with controls normally found only on the radio itself. You can take command of communication with a Push-to-Talk (PTT) Button, Emergency Button, Volume Control, 16-Channel Select Knob and 2 Programmable Buttons. This water resistant Remote Speaker Microphone also features a receive-only 3.5mm earphone jack to allow for discrete conversations. What's more, the controls are specially designed for users who wear large gloves: the buttons are large, and the channel selector knob provides tactile feedback at each position. Compatible with XTS3000, XTS3500 and XTS5000 two-way radios. Intrinsically Safe (FM) when used with Intrinsically Safe XTS3000, XTS3500 and XTS5000 radios.

**\*RMN5021A** Commander Remote Speaker Microphone

#### RSM and PSM Accessories

##### Epaulet Strap

Black leather epaulet strap secures remote speaker microphone to epaulet straps on shirt or jacket and accommodates back clip in leather cut-outs. Snap closure secures remote speaker microphone cord to allow reliable communications in hostile high movement applications.

**RLN4294A** Epaulet Strap, Velcro

**RLN4295A** Epaulet Strap, small clip

##### RF Adapter

**\*NTN8327A** RF Adapter; required for use with public safety microphone



RLN4294A



RLN4295A

### Audio Accessories

#### Ear Microphone System (EMS)

This compact unit picks up the voice through bone vibrations in the ear canal. The miniature earpiece leaves the hands free and face unobscured when worn by rescue and hazard protection personnel, who still retain the ability for direct hearing and speaking. For personnel required to wear breathing apparatus, communications with protective masks are as clear as communications without. And its high speech clarity under noisy environments makes it ideal for high noise environments. Available in PTT or Voice Activated (VOX).

**Interface module needs to be ordered separately for EMS to work.**

**\*BDN6677A** Ear Microphone for standard noise levels (up to 95 dB), black

**\*BDN6678A** Ear Microphone for Standard Noise Levels (up to 95 dB), beige

**\*BDN6641A** Ear Microphone for High Noise Levels (up to 105 dB), grey



BDN6641A  
Requires  
interface module  
sold separately

#### Interface Modules For EMS

**\*BDN6708B** Push-To-Talk Interface Module

**\*BDN6671B** Push-To-Talk and Voice-Activated Interface Module

#### Optional Accessories for EMS

**0180300E25** Earguard with Adjustable Loop

**0180358B38** Remote Push-To-Talk Ring Switch

**0180300E83** Remote Push-To-Talk Body Switch

**0180358B32** Earholder, black, size small; secures ear mic in ear

**0180358B33** Earholder, black, size medium; secures ear mic in ear

**0180358B34** Earholder, black, size large; secures ear mic in ear

**0180358B35** Earholder, clear, size small; secures ear mic in ear

**0180358B36** Earholder, clear, size medium; secures ear mic in ear

**0180358B37** Earholder, clear, size large; secures ear mic in ear

**4280369E44** Replaceable Belt Clip with Screws



0180358B33

*\* Intrinsically Safe*

## XTS5000 Series



## Portable Accessories

### Audio Accessories

**5080358B28** Eartips, black, size medium (10 per pack)

**5080358B29** Eartips, black, size large (10 per pack)

**5080358B30** Eartips, beige, size medium (10 per pack)

**5080358B31** Eartips, beige, size large (10 per pack)

### CommPort: Integrated Microphone/Receiver System

The CommPort system contains a miniature microphone and receiver, and connects to your two way radio, making it possible to hear and speak under the most adverse conditions.

**\*NTN1624A** Integrated ear microphone/receiver system with palm PTT (includes BDN6676D 3.5mm jack adapter)

**\*NTN1625A** Integrated ear microphone/receiver system with PTT on radio adapter (includes BDN6676D 3.5mm jack adapter)

**\*NTN1663A** Integrated ear microphone/receiver system with ring PTT (includes BDN6676D 3.5mm jack adapter)

**\*NTN1736A** CommPort integrated microphone/receiver with snap on side Push-To-Talk (includes BDN6676D 3.5mm jack adapter)



NTN1624A

**NNTN4186A** Integrated Microphone/Receiver System with Remote Push-To-Talk Body Switch (includes BDN6676D 3.5mm jack adapter)

**NKN6510A** Replacement Palm PTT Cable for NTN1624A

**NKN6508A** Replacement Cable for NTN1625A

**NKN6512A** Replacement Ring PTT Cable for NTN1663A

**NKN6525A** Replacement Snap-on PTT Cable for NTN1736A

**NNTN4188A** Replacement Remote Push-to-Talk Body Switch

**NTN8821A** CommPort Maintenance Kit, includes replacement ear tubes (quantity 10), windscreens (quantity 2) and microphone seal strips (quantity 10)

**NTN8986A** Adhesive Pads (quantity 90) for secure attachment to ear

**NTN8988A** Ear Straps (quantity 10) for secure attachment to ear

**4285838B01** Replacement Collar Clip

**4202006A01** Replacement Back Cover Clip

**RLN5037A** Replacement Ear Tubes (pack of 10)

### Audio Accessories

### Temple Transducer

The temple transducer represents a significant achievement in headset design and functionality. It allows the user to receive audio without covering the ear. The receiver portion of this accessory rests on the temples and is capable of converting the receive audio from a two-way radio into sound vibration. The sound vibration is transmitted through the surrounding human tissue and bone directly into the inner ear where it is received by the user. It features an in-line PTT and noise canceling boom microphone. The temple transducer enhances communication and safety by not impairing the user's hearing of external sound environment, such as from machinery and equipment, warning, and first alarms, the intercom, traffic and even casual conversations with their co-workers.

**\*RMN4049A** Temple Transducer

### Racing Headset for Two-Way Radios

Motorola is the official wireless equipment supplier of CART®, so whether your customers' playing field is a racetrack, construction site or other challenging environment, they can count on this Racing Headset for superior comfort and dependable operation.

**RMN5015A** Racing headset for two-way radios (Adapter Cable required)

**BDN6673B** Adapter Cable for XTS2500, XTS3000, XTS3500 and XTS5000



RMN5015A

*\* Intrinsically Safe*



## XTS5000 Series



### Portable Accessories

#### Audio Accessories

##### Medium Weight Headsets

Medium weight headsets offer high-clarity sound with the additional hearing protection necessary for providing consistent, clear two-way radio communications in harsh, noisy situations.

**\*NMN6258A** Medium Weight Headset, over the head with In-Line PTT, noise reduction rating = 24dB

**\*NMN6259A** Medium Weight Headset, behind the head with In-Line PTT, noise reduction rating = 24dB

**7580376E34** Replacement Foam Earseals, 1 pair

**1580376E32** Replacement Cloth Covers for Earseals, 1 pair

**5080548E02** Replacement Windscreen for Boom Microphone

**3280376E35** Replacement O-ring for Windscreen

**4204004K01** Replacement Adjustable Headstrap for NMN6259A



NMN6258A

#### Audio Accessories

##### Noise-Canceling Headsets with Boom Microphone

Ideal for two-way communication in extremely noisy environments. Dual-muff tactical headsets include two microphones on the outside of the earcups which reproduce the ambient sound back into the headset. Harmful sounds are suppressed to a safe level and low sounds are amplified up to 5 times the original level, but never more than 82dB(A). Includes on/off volume control on earcups and 3-foot curly cord. Easily replaceable earseals are filled with liquid and foam combination to provide excellent sealing and comfort. Requires separate in-line PTT adapter cable RKN4095A. Hardhat not included.

**RMN4052A** Tactical Headband Style Headset, grey; noise reduction rating of 24dB



RMN4052A



RMN4053A

**RMN4053A** Tactical Hardhat Mount Headset, grey; noise reduction rating of 22dB

##### Hardhat Mount Headset with Noise-Canceling Boom Microphone

Ideal for two-way communication in high-noise environments; mounts easily to hardhats with slots, excellent noise reduction of 22dB. Easily replaceable earseals are filled with liquid and foam combination to provide excellent sealing and comfort. 3-foot curly cord assembly. Requires separate in-line PTT adapter cable RKN4095A. Hardhat not included.

**RMN4051B** Two-Way Hardhat Mount Headset, black

##### Adapter Cables

**RKN4095A** In-Line PTT Adapter Cable. For use with RMN4051, RMN4052, and RMN4053.



RMN4051B

\* Intrinsically safe



## XTS5000 Series

## Portable Accessories, Batteries



### Audio Accessories

#### Heavyduty Headsets

Heavyduty headsets include noise-cancelling boom microphones and can be worn with or without a hardhat. Headsets are for use in noise levels up to 125 dB. The Push-To-Talk switch is located on the earcup. The VOX module is contained within the headset on voice activated units. **Heavyduty headsets require radio adapter cable BDN6673B to be ordered separately.**



BDN6645A

**\*BDN6645A** Push-To-Talk Headset with Boom Microphone; requires adapter cable BDN6673B; noise reduction rating = 24dB



BDN6635B

**BDN6635B** Voice-activated Headset with Boom Microphone; requires adapter cable BDN6673B; noise reduction rating = 24dB



BDN6636B

**\*BDN6636B** Voice-activated Headset with Throat Microphone; requires adapter cable BDN6673B; noise reduction rating = 24dB

**\*BDN6673B** Radio Adapter Cable

### Batteries

#### Nickel-Cadmium Premium

Part Number: **NTN8294BR**  
Volts: 7.5  
Avg mAh: 1525  
Height: 6-1/8"  
Intrinsically Safe: No

Part Number: **NTN8295AR**  
Volts: 7.5  
Avg mAh: 1525  
Height: 6-1/8"  
Intrinsically Safe: Yes

Part Number: **NTN8297AR**  
Volts: 7.5  
Avg mAh: 1525  
Height: 6-1/8"  
Intrinsically Safe: Yes  
Ruggedized: Yes



NTN8294BR

#### Nickel-Cadmium impres™

Part Number: **HNN9031AR**  
Volts: 7.5  
Avg mAh: 1525  
Height: 6-1/8"  
Intrinsically Safe: No

Part Number: **HNN9032AR**  
Volts: 7.5  
Avg mAh: 1525  
Height: 6-1/8"  
Intrinsically Safe: Yes

#### Nickel Metal Hydride impres™

Part Number: **NNTN4436AR**  
Volts: 7.5  
Avg. mAh: 2000 (1800 min.)  
Height: 6-1/8"  
Intrinsically Safe: Yes

Part Number: **NNTN4437AR**  
Volts: 7.5  
Avg. mAh: 2000 (1800 min.)  
Height: 6-1/8"  
Intrinsically Safe: Yes  
Ruggedized: Yes

\* Intrinsically Safe





## ***XTS5000 Series***



### ***Batteries, Antennas, Miscellaneous***

#### ***Batteries***

##### ***Nickel Metal Hydride Premium***

Part Number: **NTN8299BR**

Volts: 7.5

Avg mAh: 1700

Height: 6-1/8"

Intrinsically Safe: Yes



*NTN8299BR*

Part Number: **NTN8923AR**

Volts: 7.5

Avg mAh: 1800

Height: 6-1/8"

Intrinsically Safe: No

Part Number: **RNN4006B**

Volts: 7.5

Avg mAh: 3500

Height: 6-1/8"

Intrinsically Safe: No

Part Number: **RNN4007AR**

Volts: 7.5

Avg mAh: 3500

Height: 6-1/8"

Intrinsically Safe: Yes

##### ***Lithium-ion Premium***

Part Number: **NTN8610BR**

Volts: 7.5

Avg mAh: 1650

Height: 6-1/8"

Intrinsically Safe: No

##### ***Alkaline Premium Battery Shells***

**NTN9177A** Disposable Battery Shell – Black

**NTN9103A** Disposable Battery Shell – Orange

#### ***Antennas***

##### ***Flexible Whip Antenna***

Flexible Whip antennas have a one-piece finish and steel core for optimal radiation characteristics. Provides more comfort when radio is worn on the belt.

**8505241U03** Flexible Whip,  
1/2 Wavelength, 806-870MHz, 7"

**8505241U11** Flexible Whip,  
Dual Band, 700-800MHz

##### ***Stubby Antenna***

This stubby quarterwave antenna is ideal when radio is worn on the belt because the short antenna is non-obtrusive.

**8505241U06** Stubby,  
806-941MHz, 4"; is a broad band  
antenna that operates in  
the 800/900MHz band



*8505241U06*

#### ***Miscellaneous***

##### ***Public Safety Tilt Switch***

**\*NTN7660B** Public Safety Tilt Switch. An external emergency switch that is activated when the unit is tilted at a greater than 60 degree angle. The emergency feature must be programmed in radio to enable the tilt position.

*\* Intrinsically safe*

# **XTS5000 Series**

## *Service Tools, Aids, Manuals*

### **Service Tools**

#### **Battery Eliminator**

The Battery Eliminator acts like a battery with a cable to access a DC external power supply.

**REX4424A** Battery Eliminator

#### **Radio Interface Box**

Links radio programming cable and computer interface together. Provides required voltage shift to enable communications between radio and computer. Requires computer interface cable, radio test and programming cable, and 9 volt snap type battery (6082728J01), order separately.

**RLN4008E** Radio Interface Box



RLN4008E

#### **Wall Mounted Power Supply**

Used to supply power to radio interface box, RLN4008E.

**0180357A57** Wall Mounted Power Supply, 110 Volts

**0180358A56** Wall Mounted Power Supply, 220 Volts



0180357A57

#### **Computer Interface Cable**

Used to connect computer's serial port to Radio Interface Box.

**3080369B71** Cable, RIB to 25 pin D

**3080369B72** Cable, RIB to 9 pin D



3080369B71

#### **Radio Test and Programming Cable**

Used with Portable Radio Test Set, RTX4005B, for transmitter, receiver alignment and performance checks. Also used in programming radio.

**RKN4035D** Radio Test and Programming Cable

### **Service Aids**

#### **Programming Cable**

**RKN4105A** Programming Cable, USB, XTS2500

**RKN4106A** Programming Cable, RS232, XTS2500

#### **Test Box**

Portable test set, enables connection to audio/accessory jack. Allows switching from radio testing.

**RLN4460C** Test Box

#### **Probes**

**RTL4208A** RF Probe, 50 ohm High Frequency

**RT-5144/48/0** Needle-Fine Test Probes for High Density Circuitry (Black)

**RT-5144/48/2** Needle-Fine Test Probes for High Density Circuitry (Red)

#### **Programming Software**

Utilizing your personal computer, this software enables you to add or reprogram frequencies as your requirements change. Requires interface box and appropriate cables, must be ordered separately.

**RVN4181H** Radio Service Software

### **Manuals**

**6881074C70** VHF, UHF, 800MHz Radio Service Software Manual

**6881083C70** I VHF, UHF, 800MHz User's Guide

**6881083C75** II and VHF, UHF, 800MHz User's Guide

**6881083C85** Basic Service Manual

**6881083C90** Detailed Service Manual

**0180305J46** Ear Microphone System and Temple Transducer CD-ROM

**0180305J70** impres™ System CD-ROM