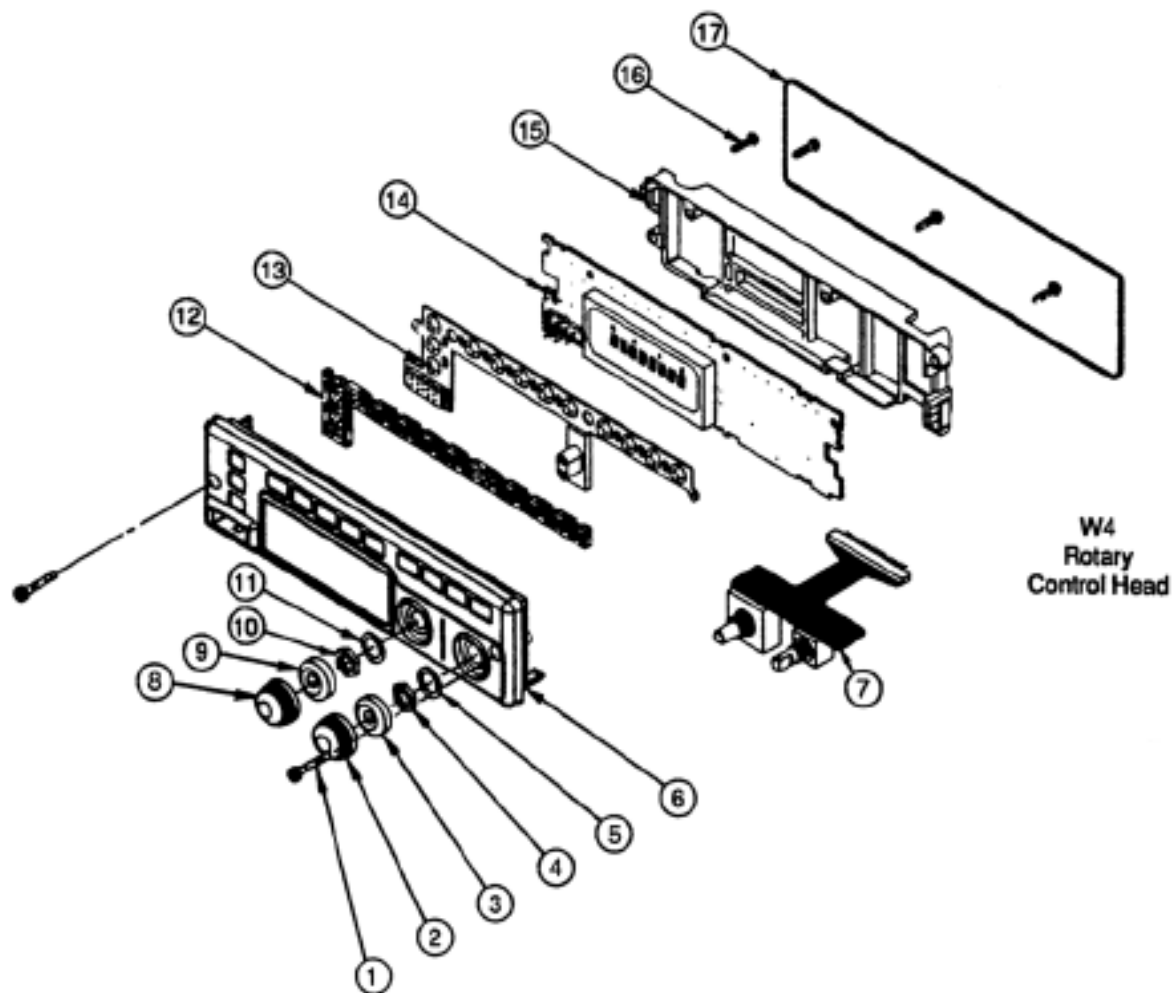


XTL 5000 Series



Parts List



Parts List

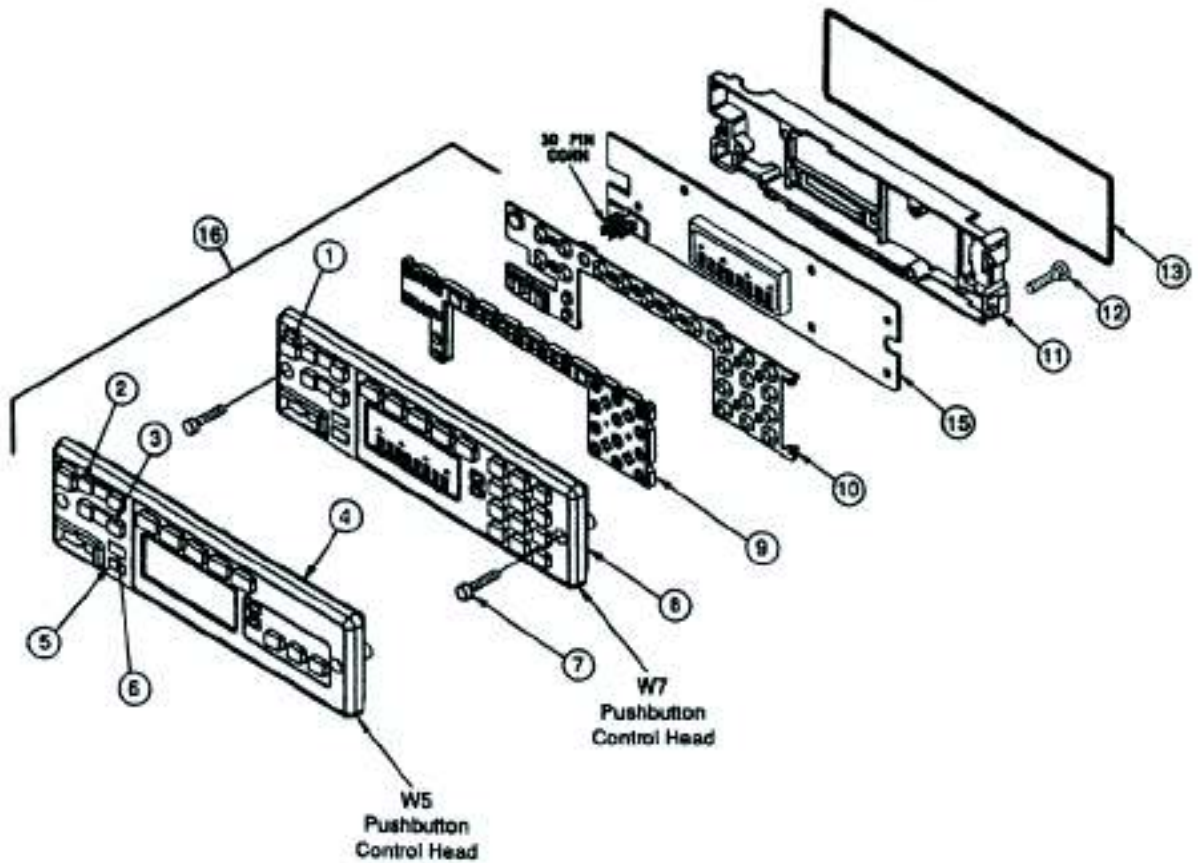
W4 Rotary Control Head

| REF. NO. | PART NO. | DESCRIPTION | REF. NO. | PART NO. | DESCRIPTION |
|-------------|-------------------|--------------------------------------|-------------|-------------------|--------------------------------------|
| 1 | 0380077M07 | Screw, control head mounting (qty 2) | 9 | 3205805V01 | Gasket, W4 shaft (qty 2) |
| 2 | 3602113Z05 | Knob, volume control | 10 | 0284218M02 | Nut, mode switch |
| 3 | 3205805V01 | Gasket, W4 shaft (qty 2) | 11 | 0484219M02 | Lockwasher, mode switch |
| 4 | 0284218M01 | Nut, volume switch | 12 | 6105129X01 | Lightpipe |
| 5 | 0484219M01 | Lockwasher, volume switch | 13 | 7505128X01 | Keypad |
| 6 | 1502117Z07 | Housing, front cover (mobile) | 14 | AAHN4045_ | Assembly, circuit board (mobile) |
| | or | | | or | |
| | 1502117Z08 | Housing, front cover (motorcycle) | | PMLN4019_ | Assembly, circuit board (motorcycle) |
| | or | | 15 | 4302112Z02 | Spacer, internal |
| | 1502117Z10 | Housing, front cover (motorcycle) | 16 | 0310945A14 | Screw, machine (qty 4) |
| | or | | 17 | 3280289L02 | Gasket, housing |
| | 1502117Z11 | Housing, front cover (motorcycle) | | | |
| | or | | | | |
| | 1502117Z12 | Housing, front cover (rear) | | | |
| 7 | 0102709J83 | Assembly, volume and rotary switch | | | |
| 8 | 3602113Z03 | Knob, mode control | | | |

Notes: _ = The latest version kit. When ordering, refer to your specific kit for this suffix letter.
The HKN4356_ Radio Cable is used to remote mount the W4 Control Head.
Universal Crypto Module (UCM) part numbers and descriptions are listed in the Encryption chapter of the service manual.

XTL 5000 Series

Mobile Accessories



Parts List

W5 and W7 Pushbutton Control Head

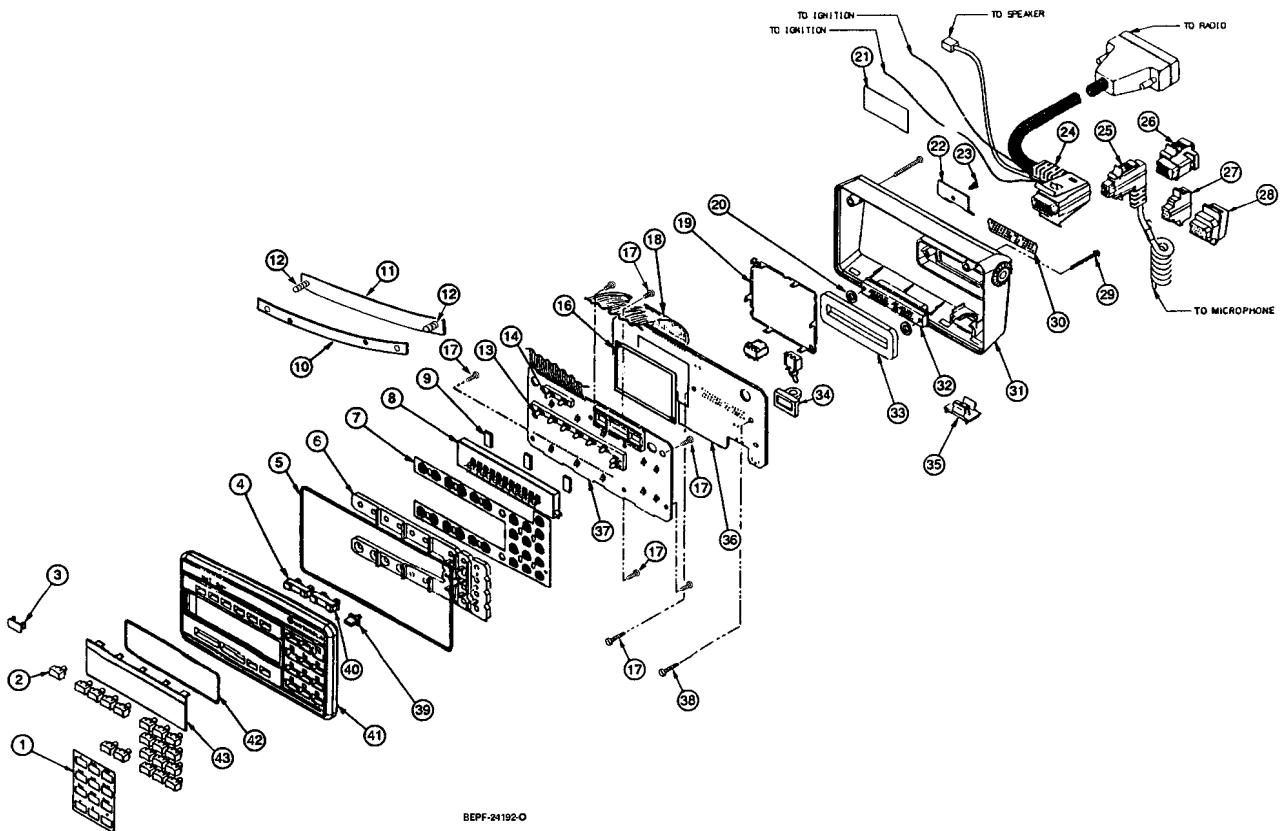
| REF. NO. | PART NO. | DESCRIPTION | REF. NO. | PART NO. | DESCRIPTION |
|-------------|-------------------|--------------------------------------|-------------|-------------------|---|
| 1 | 3880227M04 | Switch, On/Off cap | 15 | HLN6396_ | Board, control head (mobile) |
| 2 | 3880009P01 | Switch, mode rocker | | or | |
| 3 | 3880009P02 | Switch, volume rocker | | HLN6563_ | Board, control head (motorcycle) |
| 4 | 1580020S17 | Housing, W5 front cover (mobile) | 16 | 0180049S09 | Assembly, W5 front cover (mobile) |
| | or | | | or | |
| | 1580020S19 | Housing, W5 front cover (motorcycle) | | 0180049S11 | Assembly, W5 front cover (motorcycle) |
| | or | | | or | |
| | 1580020S23 | Housing, W5 front cover (motorcycle) | | 0180049S13 | Assembly, W5 front cover (motorcycle) |
| | or | | | or | |
| | 1580020S25 | Housing, W5 front cover (motorcycle) | | 0180049S15 | Assembly, W5 front cover (motorcycle) |
| | or | | | or | |
| | 1580020S27 | Housing, W5 front cover (rear) | | 0180058T16 | Assembly, W5 front cover (rear) |
| 5 | 3880092J05 | Pushbutton, HOME | | 0180049S08 | Assembly, W7 front cover (mobile) |
| 6 | 3880092J05 | Pushbutton, DIM | | or | |
| 7 | 0380077M07 | Screw, (qty 2) | | 0180049S10 | Assembly, W7 front cover (motorcycle) |
| 8 | 1580020S16 | Housing, W7 front cover (mobile) | | or | |
| | or | | | 0180049S12 | Assembly, W7 front cover (motorcycle) |
| | 1580020S18 | Housing, W7 front cover (motorcycle) | | or | |
| | or | | | 0180049S14 | Assembly, W7 front cover (motorcycle) |
| | 1580020S22 | Housing, W7 front cover (motorcycle) | | or | |
| | or | | | 0180049S15 | Assembly, W7 front cover (rear) |
| | 1580020S24 | Housing, W7 front cover (motorcycle) | | | Item 16 includes items 1, 2, 3, 4 or 8, 5, 6, 9, and 10 |
| | or | | | | |
| | 1580020S26 | Housing, W7 front cover (rear) | | | |
| 9 | 6180017S01 | Lightpipe | | | |
| 10 | 7580012S03 | Keypad | | | |
| 11 | 4380019S02 | Spacer, internal frame | | | |
| 12 | 0310945A14 | Screw, tapping (qty 7) | | | |
| 13 | 3280289L02 | Gasket, housing | | | |

Notes: _ = The latest version kit. When ordering, refer to your specific kit for this suffix letter.
The HKN4356_ Radio Cable is used to remote mount the W5 and W7 Control Head.
Universal Crypto Module (UCM) part numbers and descriptions are listed in the Encryption chapter of the service manual.

XTL 5000 Series



Mobile Accessories



BEPF-24192-Q

Parts List

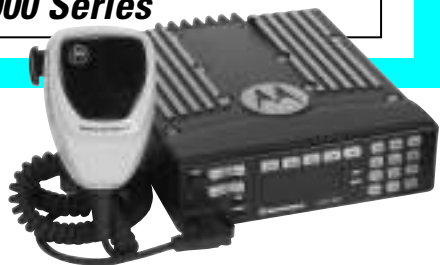
W9 Pushbutton Control Head

| REF. NO. | PART NO. | DESCRIPTION | REF. NO. | PART NO. | DESCRIPTION |
|-------------|-------------------|--|-------------|-------------------|--|
| 1 | 1380087J01 | Escutcheon | 19 | 2680190P02 | Shield, component side |
| 2 | HLN5083_ | Button, Emergency | 20 | 3205082E90 | O-Ring "D" connector (qty 2) |
| | HLN5091_ | Button, Dir | 21 | 3380178M01 | Nameplate |
| | HLN5066_ | Button, Scan | 22 | 0784323C01 | Bracket, strain relief |
| | HLN5256_ | Button, Srch | 23 | 0310908A18 | Screw, machine |
| | HLN5074_ | Button, Call | 24 | HKN4356_ | Cable, radio |
| | HLN5268_ | Button, Page | 25 | HMN1050_ | Kit, microphone |
| | HLN5259_ | Button, RPGM | | or | |
| | HLN5258_ | Button, Site | | HMN1080_ | |
| | HLN5090_ | Button, PHON | | or | |
| | HLN5072_ | Button, H/ L | | HMN1061_ | |
| | HLN5257_ | Button, Lock | 26 | 1580221J01 | Housing, VIP connector (optional) |
| | HLN5076_ | Button, RCL | 27 | 7502118Z01 | Cover, rubber dust (MIC) |
| | HLN5085_ | Button, SQL | 28 | 7502118Z02 | Cover, rubber dust (VIP) |
| | HLN5078_ | Button, Del | 29 | 0310908A33 | Screw, machine (qty 2) |
| | HLN5087_ | Button, Home | 30 | 3205198X01 | Gasket, face |
| | HLN5079_ | Button, Sel | 31 | 1505199X05 | Housing, back |
| | HLN5095_ | Button, blank | 32 | 2805778W01 | Connector, mini "D" 50 contact |
| 3 | 3880253K04 | Plug | 33 | 3205143X01 | Gasket, "D" connector |
| 4 | 3880195P03 | Switch, mode rocker | 34 | 3205143X01 | Gasket, On/Off switch |
| 5 | 3205145X01 | Gasket, internal frame | 35 | 3880128J01 | Key, On/Off |
| 6 | 6105126X01 | Lightpipe, keypad | 36,37 | HCN4046E | W9 Control Head (Board Kit, includes items 7, 8, 9, 13, 14, 16, 18, 19, 30 and 32) |
| 7 | 7505127X01 | Keypad | | | |
| 8 | 7280242J01 | Display, VF | 38 | 0310945A14 | Screw, tapping (qty 2) |
| 9 | 7580094M05 | Pad, shock (qty 3) | 39 | 3880092J05 | Key, blank |
| 10 | 1405410X01 | Insulator | 40 | 3880195P02 | Switch, volume rocker |
| 11 | 4180042S01 | Spring, leaf assembly | 41 | 1505125X12 | Housing, front |
| 12 | 0380041S01 | Screw, captive (qty 4) | 42 | 3205144X01 | Gasket, lens |
| 13 | 6180026R02 | Spacer, LED (8-position) | 43 | 6105146X01 | Lens, VF display |
| 14 | 6180027R02 | Spacer, LED (2-position) | | | |
| 16 | 2680190P02 | Shield, solder side (Includes two 1480269K01 insulators) | | | |
| 17 | 0310945A11 | Screw, tapping (qty 5) | | | |
| 18 | 3080034K01 | Cable, flex | | | |

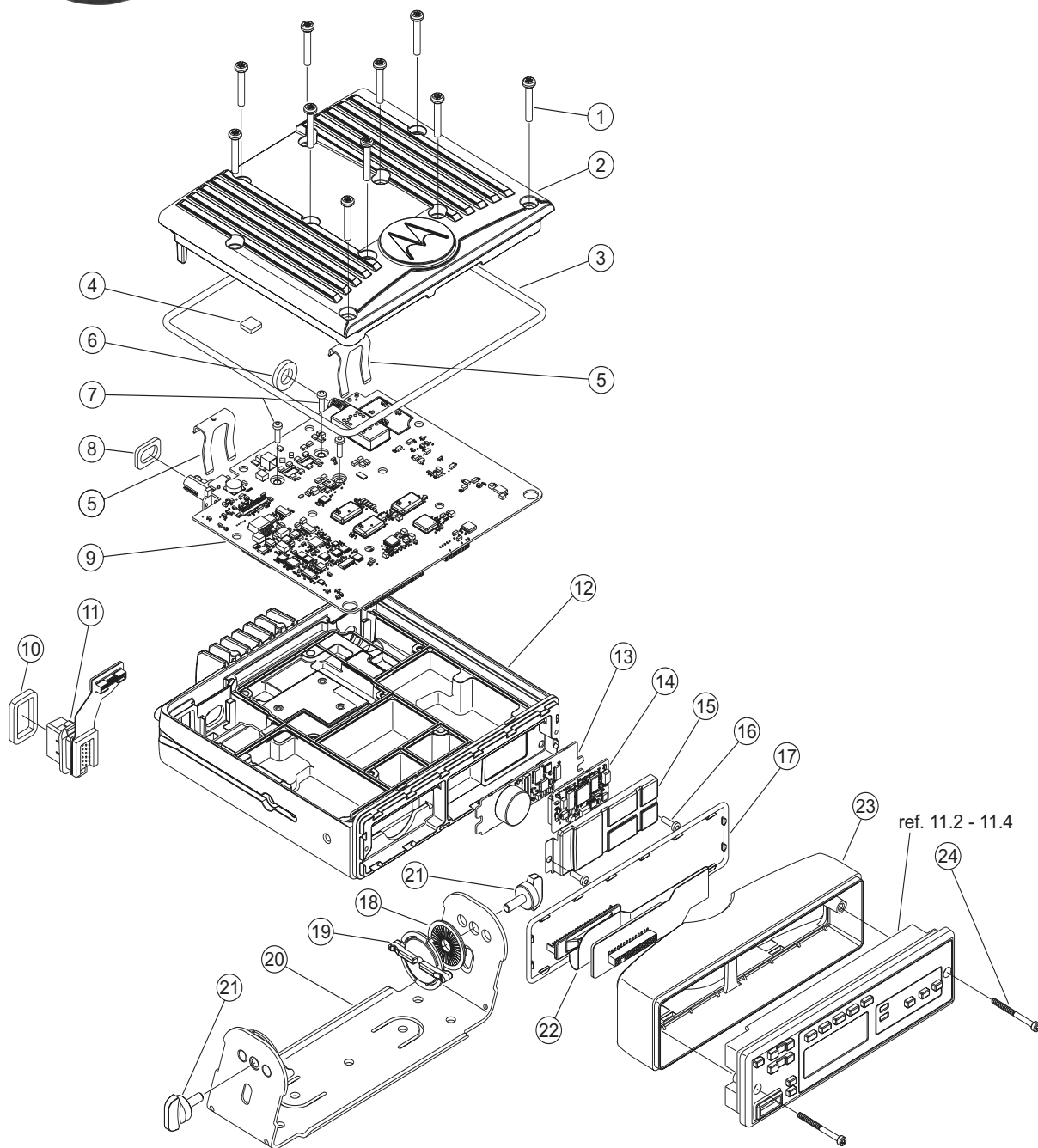
Note: _ = The latest version kit. When ordering, refer to your specific kit for this suffix letter.

Universal Crypto Module (UCM) part numbers and descriptions are listed in the Encryption chapter of the service manual.

XTL 5000 Series



Mobile Accessories



Parts List

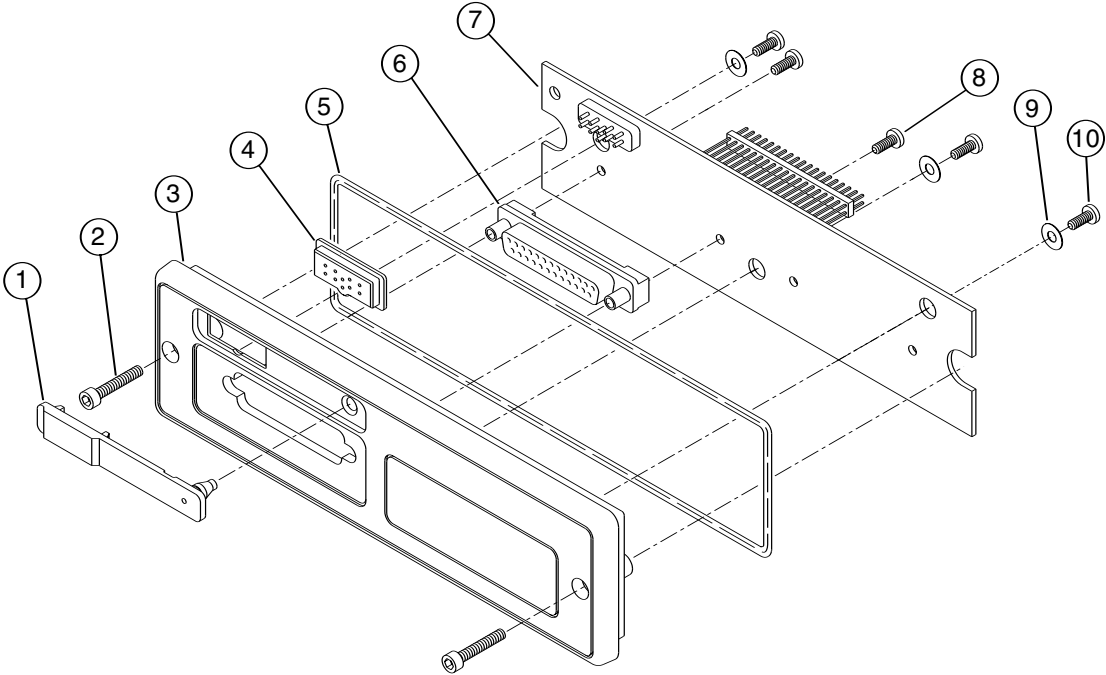
10-35W Radio

| REF. NO. | PART NO. | DESCRIPTION |
|-------------|-------------------|---|
| 1 | 0385870E01 | Screw Assembly, top cover |
| 2 | 1585860C02 | Cover, millennium |
| 3 | 3285495E01 | Seal, main O-ring |
| 4 | 7585060F01 | Pad, thermal, grey |
| 5 | 3285743E01 | Seal, RF connector |
| 6 | 0310907A20 | Screw, M3X0.5X10 pan-head |
| 7 | 3285744E01 | Seal, DC connector |
| 8 | 4285702E01 | Clip, RF/DC retention |
| 9 | HUF4017_ | PCB Assembly, main |
| 10 | 3085741E01 | Connector, rear accessory port |
| 11 | 3285742E01 | Seal, accessory |
| 12 | 0305760W02 | Screw, M5.0X0.8X14.9 wing |
| 13 | 4305425W01 | Spacer, inner |
| 14 | 4305426W03 | Spacer, outer |
| 15 | HLN6861_ | Trunnion, millennium |
| 16 | 2785862C02 | includes 18 (x2), 19 (x2), AND 21 (x2) Chassis, millennium |

| REF. NO. | PART NO. | DESCRIPTION |
|-------------|--|--|
| 17 | HLN6876_ or HLN6877_ | PCB Assembly, secure interface (3-day key retention) PCB Assembly, secure interface (30-second key retention) |
| 18 | --- | Module, secure |
| 19 | 2685498E01 | Shield, secure |
| 20 | 0310907A20 | Screw, M3X0.5X10, pan-head |
| 21 | 3285471E01 | Seal, headbridge |
| 22 | 3085020F01 or 3085019F01 | Flex, dash mount Flex, remote mount |
| 23 | 1585245E01 | Housing, headbridge |
| 24 | 0380077M07 | Screw, control head M3X35 |

Note: _=The latest version kit. When ordering, refer to your specific kit for this suffix letter.

**Mobile
Accessories**



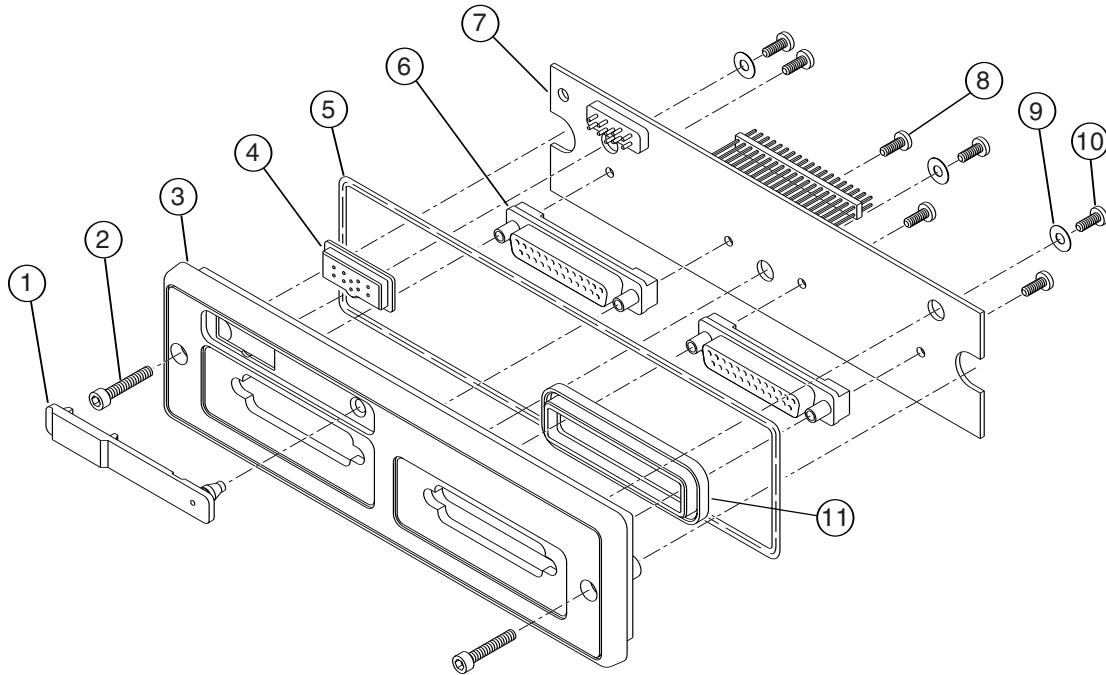
Motorcycle Interconnect Board and Assembly (HLN6365)

| REF. NO. | PART NO. | DESCRIPTION |
|-------------|-------------------|---|
| 1 | 3880064P01 | Cap, DVP connector |
| 2 | 0380077M07 | Screw, front mount |
| 3 | 1580062P12 | Housing, remote front |
| 4 | 3280063P01 | Gasket, DVP connector |
| 5 | 3280289L02 | Gasket, O-Ring |
| 6 | 0980159P01 | Connector, D-Sub |
| 7 | HLNxxxx_ | Board, interconnect (See dealer for applicable kit number.) |

| REF. NO. | PART NO. | DESCRIPTION |
|-------------|-------------------|-----------------------------|
| 8 | 0300139581 | Screw, mach 4-40X5/16 P |
| 9 | 0400131974 | Washer, flt. 130.312 |
| 10 | 0310945A11 | Screw, tapping P3.12X1.27X8 |

Note: _ = The latest version kit. When ordering, refer to your specific kit for this suffix letter.

Parts List



Low- and Mid-Power Interconnect Board and Assembly (HLN6344)

| REF. NO. | PART NO. | DESCRIPTION |
|-------------|-------------------|---|
| 1 | 3880064P01 | Cap, DVP connector |
| 2 | 0380077M07 | Screw, front mount |
| 3 | 1580062P11 | Housing, remote front |
| 4 | 3280063P01 | Gasket, DVP connector |
| 5 | 3280289L02 | Gasket, O-Ring |
| 6 | 0980159P01 | Connector D-Sub |
| 7 | HLNxxxx_ | Board, interconnect (See dealer for applicable kit number.) |
| 8 | 0300139581 | Screw, mach 4-40X5/16 P |

| REF. NO. | PART NO. | DESCRIPTION |
|-------------|-------------------|-----------------------------|
| 9 | 0400131974 | Washer, flt. 130.312 |
| 10 | 0310945A11 | Screw, tapping P3.12X1.27X8 |
| 11 | 3280025R01 | Gasket, remote |

NOT SHOWN

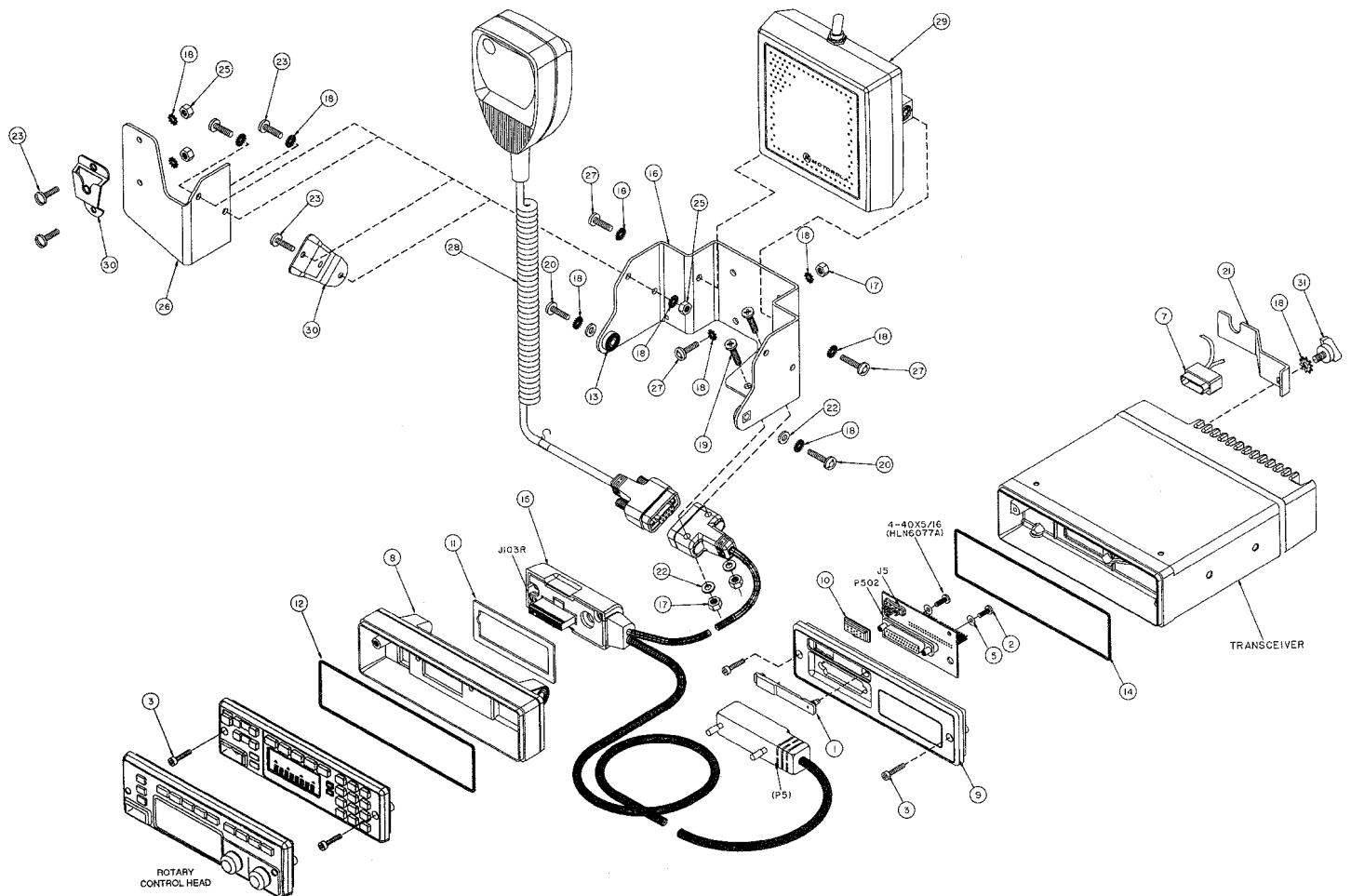
1580005G01* Cover, dust

Note: _ = The latest version kit. When ordering, refer to your specific kit for this suffix letter.

* = Used when the option cable is not used or when the radio is stowed.

XTL 5000 Series

Mobile Accessories



Parts List

Motorcycle Radio Remote-Mount Control Head with Speaker & Microphone

| REF. NO. | PART NO. | DESCRIPTION |
|-------------|-------------------|---|
| — | See Model Chart | Motorcycle hardware kit SECURENET |
| — | See Model chart | Motorcycle hardware kit |
| 1 | 3880064P01 | Cap, SECURENET connector |
| 3 | 0380077M01 | Screw, front-mount (4 used) |
| 7 | HLN6890_ | Cable, accessory, motorcycle |
| 8 | 1580293L03 | Housing, back remote rework |
| 9 | 1580062P12 | Housing, front remote SECURENET |
| 10 | 3280063P01 | Gasket, SECURENET |
| 11 | 3280231M01 | Gasket |
| 12 | 3280289L02 | Gasket, housing |
| 13 | 4380128N01 | Spacer, trunnion (2 used) |
| 14 | 3285471E01 | Seal, headbridge |
| 15 | See Model Chart | Control-head cable, 22-conductor |
| — | See Model Chart | Motorcycle mounting kit |
| 16 | 0780200P01 | Bracket, control-head / speaker-mounting |
| 17 | 0205681N03 | Nut, hex, M5 x 0.8-6H x 8.87 (6 used) |
| 18 | 0400002647 | Lockwasher #10 ext (14 used) |
| 19 | 0380114M05 | Screw, machine, M5 x 0.8 x 30 mm (2 used) |
| 20 | 0380114M04 | Screw, machine, M5 x 0.8 x 16 mm (2 used) |
| 22 | 0400128991 | Washer, 0.234 x 0.5 x 0.048 (4 used) |
| 23 | 0307644M19 | Screw, machine, 8-32 x 7/ 16 (4 used) |
| 25 | 0200001355 | Nut, hex, 8-32 x 5/ 16 x 1/ 8 (4 used) |

| REF. NO. | PART NO. | DESCRIPTION |
|-------------|-------------------|---|
| 26 | 0780201P01 | Bracket, extension |
| 27 | 0380114M03 | Screw, machine, M5 x 0.8 x 12 mm (2 used) |
| 28 | See Model Chart | Microphone and coiled cord |
| 29 | --- | Speaker (see page 219) |
| 30 | 0180743T91 | Spring and bracket eyelet (HLN5391A) |
| 31 | 3085019F01 | Remote flex |
| 32 | 1585245E01 | Housing, headbridge |
| 33 | HLN6884_ | Motorcycle interconnect board |
| 34 | 0380077M07 | Screw, control-head, M3 x 35 mm |

NON- REFERENCED ITEMS

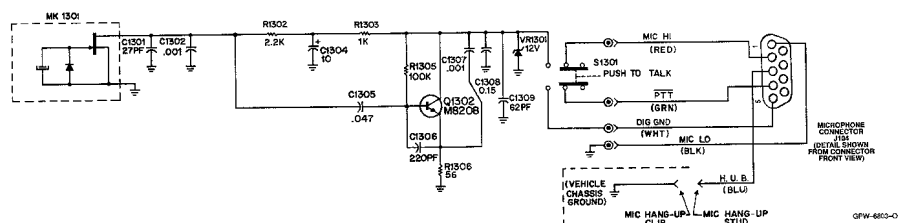
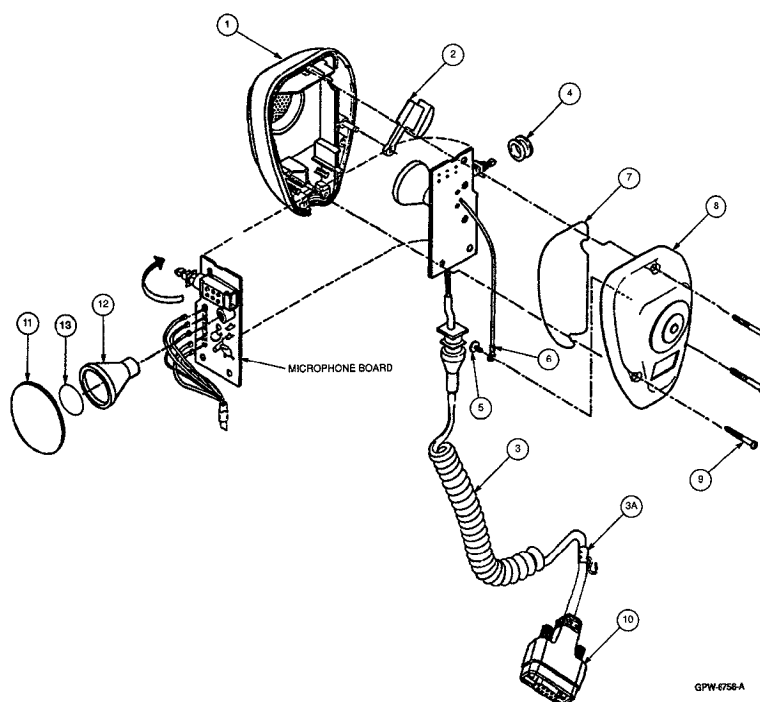
| | |
|-------------------|-------------------------------|
| 0312002A01 | Screw, self-drilling (2 used) |
| 0312002C01 | Screw, self-drilling* |
| 2900824456 | Lug* |
| 0780127N02 | Trunnion, remote** |

NOTE: _= The latest version kit. When ordering, refer to your specific kit for this suffix letter.

* = These parts are provided in hang- up clip it for mounting the hang-up clip on surfaces that are not metallic and/ or are not grounded to the motorcycle chassis.

**= Used to mount control head when speaker and control head are mounted separately.

Mobile Accessories

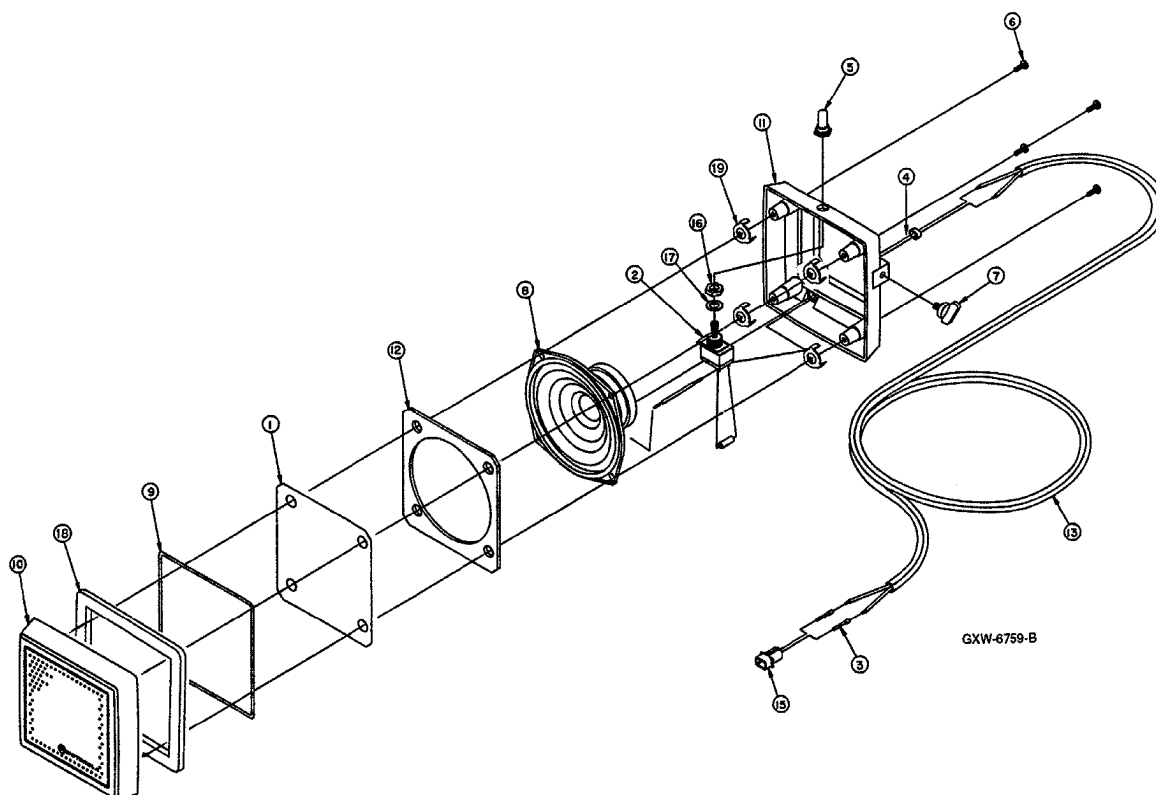


HMN1062_ Motorcycle Microphone

| REF. | PART NO. | DESCRIPTION |
|------|-------------------|--|
| | HLN5459_ | Microphone PC board (see Detailed Service Manual) |
| | See Model Chart | |
| 1 | 1500335M01 | Hardware kit, motorcycle |
| 2 | 3880144D03 | Front housing, microphone |
| 3 | 3080144D03 | Button, microphone PTT |
| 3A | 4284061A03 | Cable, coiled, includes: Clamp, wire |
| 4 | 0580221K01 | Grommet, PTT switch |
| 5 | 0310943M09 | Screw, tapping, TT3 x 0.5 x 8 |

| REF. | PART NO. | DESCRIPTION |
|------|-------------------|-------------------------------|
| 6 | 3080206L01 | Wire, PC board to weight |
| 7 | 3280058H03 | Gasket, housing |
| 8 | 0180750T91 | Rear housing, microphone |
| 9 | 0380076E04 | Screw, metric H-LO (3 used) |
| 10 | 0980218J01 | Receptacle, microphone |
| 11 | 3500008M02 | Membrane |
| 12 | 0580148D01 | Grommet, microphone cartridge |
| 13 | 3580089D01 | Microphone felt |

Parts List



HSN6003_ Motorcycle Weather-Resistant Speaker

| REF. NO. | PART NO. | DESCRIPTION |
|-------------|-------------------|--------------------------------------|
| 1 | 3506850K01 | Cloth grille |
| 2 | 4083477E03 | Switch, toggle, SPST |
| 3 | 3910184A45 | Contact, plug (2 used) |
| 4 | 4282018H05 | Cable retainer |
| 5 | 3206682F01 | Seal, toggle switch |
| 6 | 0300140001 | Screw, tapping, 6-19 x 7/ 8 |
| 7 | 0384244C06 | Screw, wing, black shadow |
| 8 | 5084561B08 | Speaker, 5-inch, 30 W |
| 9 | 3200046M04 | Gasket |
| 10 | 1300133M05 | Bezel |
| 11 | 1580099R02 | Housing, speaker, weather- resistant |
| 12 | 3206849K01 | Gasket |

| REF. NO. | PART NO. | DESCRIPTION |
|-------------|-------------------|-------------------------------|
| 13 | 3083155H01 | Cable, 2-conductor |
| 15 | 1510183A18 | Housing, connector, 2-contact |
| 16 | 4083477E03 | Nut |
| 17 | 0400001757 | Washer |
| 18 | 3280000S01 | Gasket, speaker |
| 19 | 0480299R01 | Capsert (4 used) |

NON- REFERENCED ITEMS

| | |
|-------------------|--|
| 0611086A27 | Resistor, 47 ohm, ±5%, 1 W |
| 0780200E01 | Trunnion bracket, speaker (not shown) |
| 0312002B14 | Screw, self-drilling, 10-16 x 1 (3 used) |

Mobile Accessories

Microphones

HMN1050D Desk Top Microphone
(For Control Station Operation)

HMN1061A A Palm Mic for use with
W9 Radio

HMN1079A Water Resistant
Palm Microphone

HMN1080A Standard Palm Mic



Speakers

Speaker For Siren and Public Address

TDN6251A Siren Speaker Round with
Chrome Finish

TDN6252A Siren Speaker Rectangular
with Chrome Finish

TDN6253A Siren Speaker Underhood
with Grey Finish

TDN6254A Siren Speaker Round with
Grey Finish



External Speaker

HSN4018B External Speaker



XTL 5000 Series

Mobile Accessories

Miscellaneous Hardware

HLN6372A Key Lock Mount

HLN1224B Auxiliary Switch Panel (W591-W4, W5, W7)

HLN1342A Auxiliary Switch Panel (W591-W9)

Cables

Adapter Cables

HKN6158A Audio Cable Adapter

HKN6159A Adapter Cable Data

HKN4356B Radio Cable, 17 foot

Power Cables

HKN4191B Power supply cable - High power (60 watt)
Power supply cable

HKN4192B 1-45W Power cable 20 foot; 12V

Remote Mount Cables

YKN4261A Front Control Head cable, 10 Foot

YKN4246A Front Control Head cable, 30 Foot

YKN4248A Front Control Head cable, 50 Foot

YKN4249A Front Control Head cable, 75 Foot

YKN4255A Front Control Head cable, 115 Foot

YKN4256A Front Control Head cable, 150 Foot

Control Station Accessories

HPN4001B Power supply and
cable (25-60 watt models)

HLN6042A Control
station tray



HPN4001B

Emergency Switch



HLN5113B

HLN5113B Emergency Footswitch; Enables
user to send an emergency message to a
console, where their unit ID can be
displayed and an alarm sounded.

HLN6188A Pushbutton External Emergency

Antennas

Low Profile Antennas

VHF

HAD4006A

136-144MHz 1/4 Wave Roof Mount

HAD5007A

144-152MHz 1/4 Wave Roof Mount

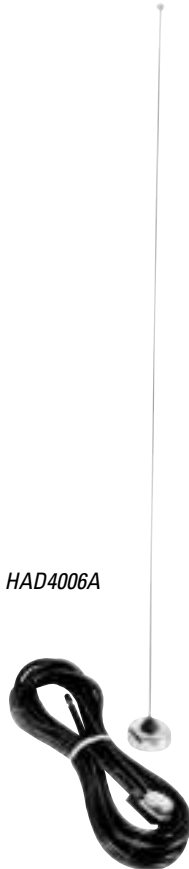
HAD4008A

152-162MHz 1/4 Wave Roof Mount

HAD4009A

162-174MHz 1/4 Wave Roof Mount

HAD4006A



UHF

HAE6012A

380-420MHz 1/4 Wave Roof Mount

HAE4003A

450-470MHz 1/4 Wave Roof Mount

HAE6010A

380-420MHz 3.5dB Gain Roof Mount

HAE4012A

450-470MHz 3.5dB Gain Roof Mount

HAE6011A

380-420MHz 5.0dB Gain Roof Mount

RAE4014A

450-470MHz 5.0dB Gain Roof Mount

HAE6013A

380-470MHz Wideband

700/800MHz

HAF4013A

762-870MHz 3dB Gain Low Profile

HAF4014A

762-870MHz 3dB Gain Elevated Feed

HAF4015A

762-870MHz 3dB Gain Motorcycle Antenna

HAF4016A

762-870MHz 1/4 Wave Roof Mount

HAF4017A

762-870MHz 3dB Gain Collinear Roof Mount

HAF4018A

762-870MHz Low Profile Motorcycle Antenna

HAE4003A



XTL 5000 Series

Service Aids, Manuals

Service Aids

RVN4186J Radio Service Software

HKN6155A Programming/Flash Cable

0180386A82 Anti-Static Grounding Kit

8180384N71 Chassis Eliminator

1185984D01 Electromagnetic Interference (EMI) Metallic
Shielding Tape

0180320B16 Magnetic Screwdriver Set with Bits

6686119B01 Plastic Scrapping Tool

6680163F01 Removal and Insertion Tool



RSX4043A

RSX4043A Roto Torq Adjustable
Torque Driver

Manuals

6881096C68 User guide XTL 5000 W4 W5 W7

6881096C72 Installation Manual

6881096C73 Basic service manual